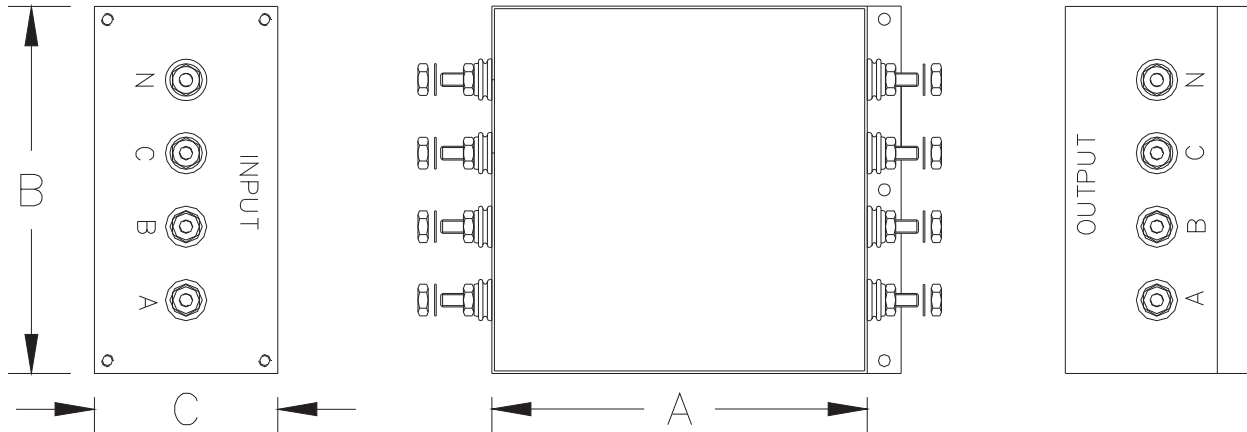


## EMI Filters

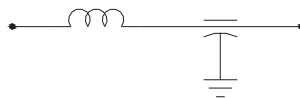
### 120/208 VAC Three Phase With Filtered Neutral



### Specifications

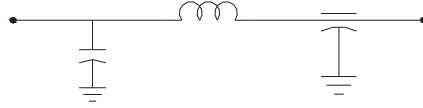
◆ Voltage Rating	120/208 VAC @ 50/60 Hz and 400 Hz
◆ Visual/Mechanical	Per MIL-PRF-15733, paragraph 4.6.1
◆ Insulation Resistance	1500 MΩ minimum per MIL-STD-202, Method 302
◆ DWV	1000 VDC line-to-line & line-to-chassis per MIL-STD-202, Method 301
◆ Insertion Loss	Per MIL-STD 220
◆ Voltage Drop	Less than 1% of rated voltage per paragraph 4.6.8 of MIL-PRF-15733
◆ Terminal Strength	Per MIL-STD-202, Method 211
◆ Operating Temperature	-55° C to +71° C
◆ Storage Temperature	-55° C to +105° C
◆ Threaded Terminals	10-32UNF-2A
◆ Threaded Inserts	10-32UNF-2B
◆ Bracket Mounting Holes	0.203" Diameter
◆ Chassis & Terminal Finish	Electro Tin-Lead
◆ Chassis Material	CRS

### Single L



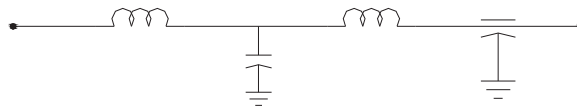
Captor Part Number	Current Rating Amps	A	B	C	Insertion Loss Curve
A-9622	1	3.00	4.75	1.50	Fig. 1
A-9623	5	3.50	4.75	1.50	Fig. 1
A-9624	10	4.00	4.75	2.00	Fig. 1
A-9625	15	4.50	5.25	2.50	Fig. 1
A-9626	25	4.50	6.50	2.50	Fig. 1

### Single $\pi$



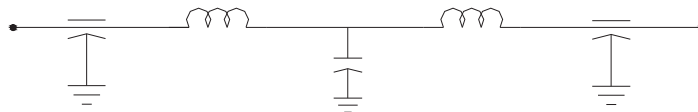
Captor Part Number	Current Rating Amps	A	B	C	Insertion Loss Curve
A-9627	1	3.50	4.75	1.50	Fig. 2
A-9628	5	4.00	4.75	1.50	Fig. 2
A-9629	10	4.50	4.75	2.00	Fig. 2
A-9630	15	5.00	5.25	2.50	Fig. 2
A-9631	25	5.00	6.50	2.50	Fig. 2

### Double L



Captor Part Number	Current Rating Amps	A	B	C	Insertion Loss Curve
A-9632	1	4.00	4.75	1.50	Fig. 3
A-9633	5	5.25	4.75	2.00	Fig. 3
A-9634	10	6.50	4.75	2.25	Fig. 3
A-9635	15	7.25	5.50	3.50	Fig. 3
A-9636	25	7.25	6.50	3.50	Fig. 3

### Double $\pi$



Captor Part Number	Current Rating Amps	A	B	C	Insertion Loss Curve
A-9637	1	5.50	4.75	2.00	Fig. 4
A-9638	5	7.00	4.75	2.00	Fig. 4
A-9639	10	6.50	6.00	2.25	Fig. 4
A-9640	15	7.25	6.25	2.50	Fig. 4
A-9641	25	9.00	6.50	3.00	Fig. 4

# EMI Filters

## 120/208 VAC Three Phase With Filtered Neutral

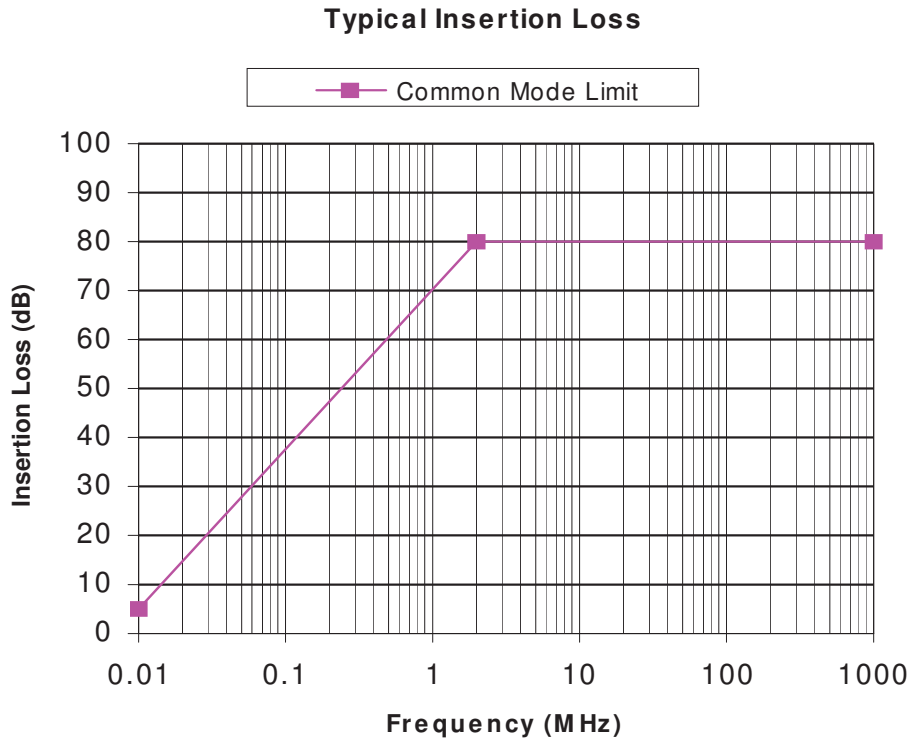


Figure 1

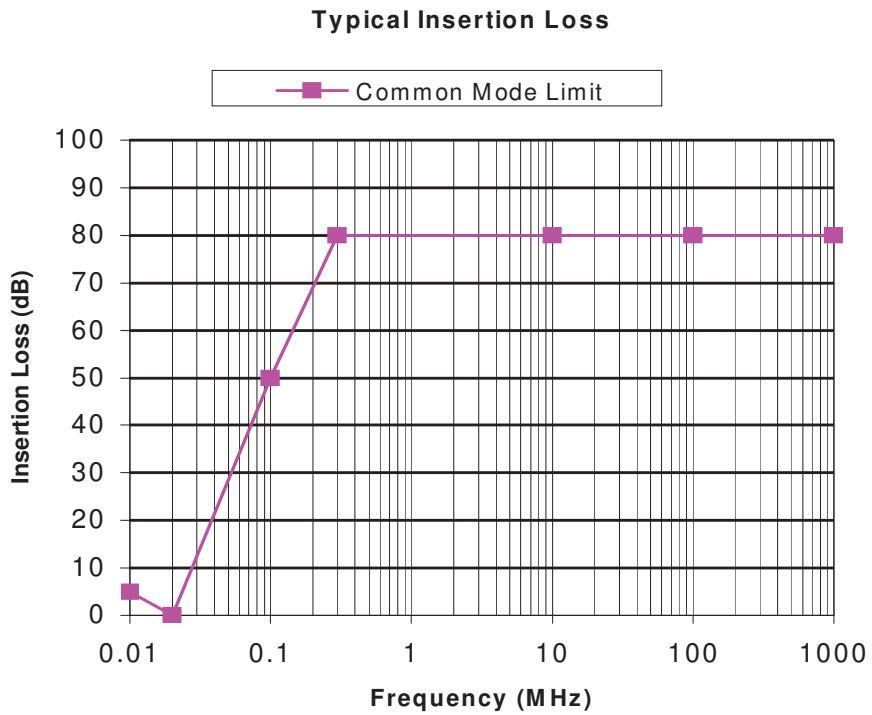


Figure 2

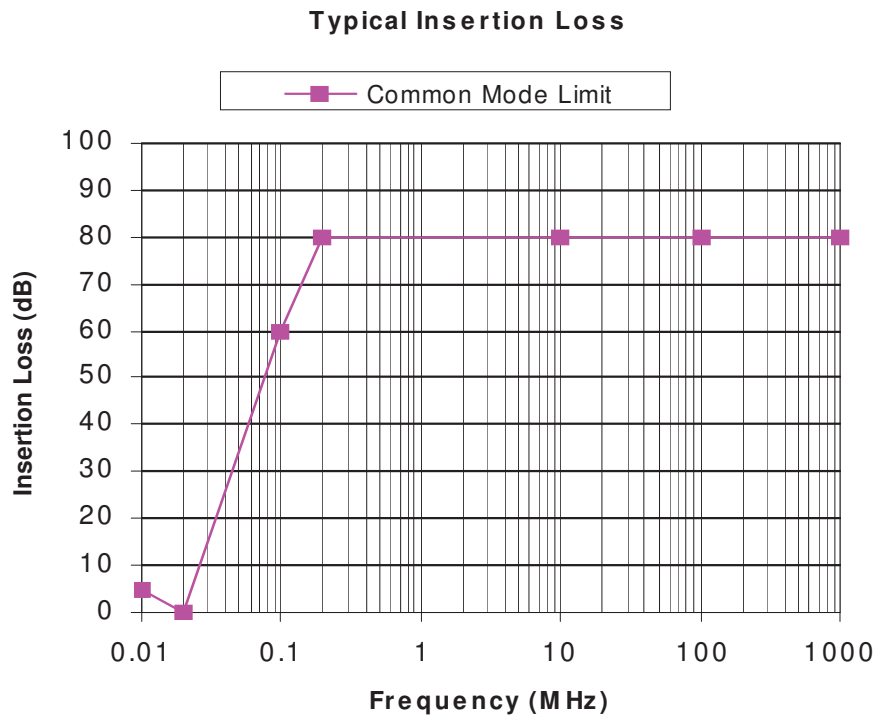


Figure 3

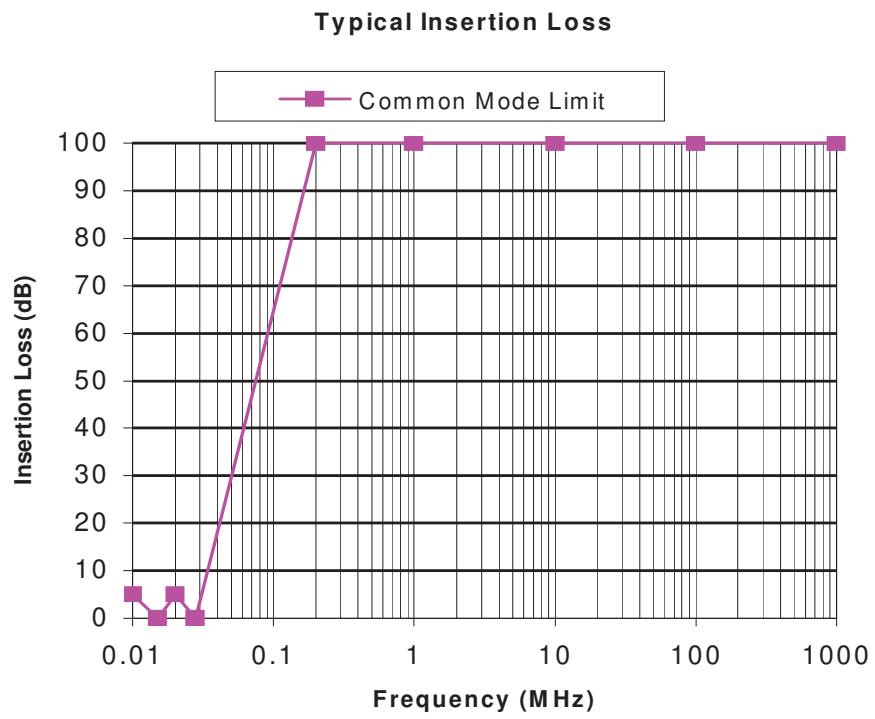


Figure 4